



## A great solution for whiteboard lighting

- Excellent photometric performance creating the best viewing conditions
- Highly efficient LED (85lm/W) with DALI driver to maximise energy savings
- A variety of mounting possibilities for design flexibility, including surface, suspended, wall and continuous lines
- Completes the Jupiter family to light an entire classroom with the same design theme

### Applications

- Education
- Libraries
- Meeting and office spaces

### Luminaire Information

- Life time 55 000 hours @L80 Ta 25°C
- 4500lm (53W)
- 85lm/W
- Colour temperature 3000/4000K
- CRI 80
- MacAdams 3 initial

### Materials/Finish

Body: sheet steel painted white (close to RAL 9010)  
Endcap: moulded in white polycarbonate  
Optic: lens acrylic diffuser with white painted steel

### Installation/Mounting

#### Surface:

Luminaire fixes to ceiling via keyhole slots at 700mm centres.  
Electrical connection via Ø20,5mm holes at ends or centre, into piano key terminal blocks.

#### Suspended:

Luminaire is self-balancing and suspended via 2 adjustable 1,5m long quick lock single suspension wires (optional suspension kit 96241826) at 1.090mm fixing centres.

#### Bracket:

Asymmetric version can also be wall mounted with bracket kit 96241825 (order separately).

All versions are suitable for mounting end to end in continuous rows using corresponding connection kit for mechanical connection and through wiring kit (both to be ordered separately).

### Specification

#### To specify state:

A versatile whiteboard luminaire for surface, suspension self-balancing or bracket mounting with direct LED light source. Asymmetric photometry with 3000K/4000K colour temperature.

CRI > 80 and a lifetime of 55 000 hours @ L80 Ta 25°C.

Mounted individually or in continuous lines with DALI Driver.

As Thorn Jupiter 3 LED Asymmetric.

**Standards**



**Light source**



**Education Application**

Lighting is integral to education, facilitating learning and providing a comfortable environment for students and teachers.

In a learning space we find two needs from a luminaire; asymmetric for whiteboard and general low glare for the teaching space.

European Standards are well defined; we need to reach an average light level suited to the many tasks, uniform enough to allow reconfiguring of desks through the day and providing enough light

to the face of student and teacher so that good communication and understanding is achieved.

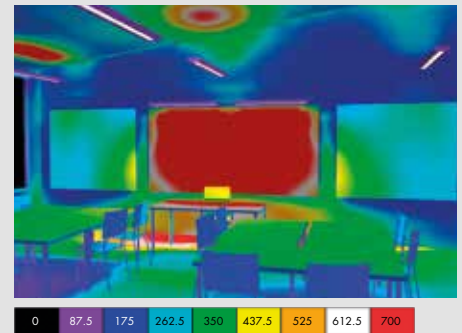
Asymmetric lighting for whiteboards needs be adaptable to the size, location and finish of the board, as well as dimmable to allow electronic media projection when needed. All this whilst providing no veiling reflections in the whiteboard surface.



**Classroom with conventional solution**



**Jupiter 3 LED family with Jupiter 3 LED Asymmetric over the whiteboard**



**Jupiter 3 LED Asymmetric**

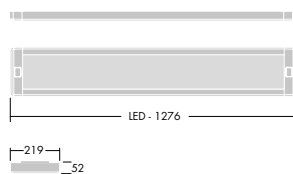
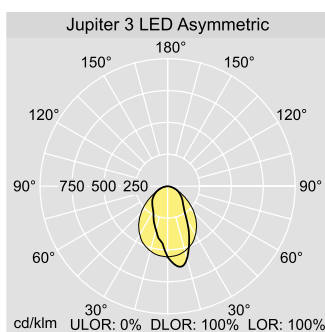
Thanks to Thorns' expertise in optical design, the asymmetric luminaire will give the uniformity and illuminance level on the whiteboard while avoiding glare. Students, wherever they are in the room, will be able to read the board without any effort reducing eye strain and improving concentration.

The main lighting with MPT optic meets the requirements of EN12464 and importantly good glare control with UGR<19. The Indirect component increases the uniformity, vertical light to the face and modelling index of the teaching room and so improves the communication between students and teachers.

High efficiency LED luminaires (up to 97 LM/W) combined with DALI controls help to significantly decrease the energy consumption of the building as a whole and meet the demanding energy targets imposed by most educational establishments.

With the ability to create a continuous run or an out-of-the-box solution Jupiter 3 LED adapts easily to the layout of a flexible learning environment, its furniture and all teaching surfaces.

**Overview**



**Ordering Guide**

Description	Wt (kg)	SAP Code
<b>Jupiter 3 LED Asymmetric Dimmable</b>		
JUP3 LED A/S 4200 HFIX MPT L840	4.4	96627760
JUP3 LED A/S 4200 HFIX MPT L830	4.4	96627761
<b>Jupiter 3 LED Direct Dimmable</b>		
JUP3 LED D 2850 HFIX MPT L840	4.4	96241846
JUP3 LED D 4200 HFIX MPT L840	4.4	96241847
JUP3 LED D 2750 HFIX MPT L830	4.4	96642593
JUP3 LED D 4050 HFIX MPT L830	4.4	96642594
<b>Jupiter 3 LED Direct Dimmable emergency</b>		
JUP3 LED D 2850 HFIX E3 MPT L840	4.4	96241850
JUP3 LED D 4200 HFIX E3 MPT L840	4.4	96241851
<b>Jupiter 3 LED Direct/Indirect Dimmable</b>		
JUP3 LED DI 3900 HFIX SWD MPT ML3 L840	4.4	96241856
JUP3 LED DI 3900 HFIX MPT ML5 L840	4.4	96551771
JUP3 LED DI 3900 HFIX MPT ML6 L840	4.4	96241854
JUP3 LED DI 4700 HFIX SWD MPT ML3 L840	4.4	96241857
JUP3 LED DI 4700 HFIX MPT ML5 L840	4.4	96551772
JUP3 LED DI 4700 HFIX MPT ML6 L840	4.4	96241855
JUP3 LED DI 3800 HFIX SWD MPT ML3 L830	4.4	96642595
JUP3 LED DI 4550 HFIX SWD MPT ML3 L830	4.4	96642596
JUP3 LED DI 3800 HFIX MPT ML5 L830	4.4	96642597
JUP3 LED DI 4550 HFIX MPT ML5 L830	4.4	96642598
<b>Jupiter 3 LED Direct/Indirect Dimmable Emergency</b>		
JUP3 LED DI 3900 HFIX E3 MPT ML6 L840	4.4	96241860
JUP3 LED DI 4700 HFIX E3 MPT ML6 L840	4.4	96241861
<b>Accessories</b>		
JUP3 D RAS BRA MWA	WALL BRACKET	96241825
JUP3 CONNECT KIT TWIN LAMP	CONNECT KIT	96241824
JUP3 D TWKIT 1200MM	THROUGH WIRING	96241827
JUP3 D TWKIT 1500MM	THROUGH WIRING	96241828
JUP3 MSW1 X 2	WIRE SUSPENSION	96241826
JUP3 INFILL PANEL 1243MM TWIN	INFILL PANEL	96241967
JUP3 INFILL PANEL 1543MM TWIN	INFILL PANEL	96551446

HFIX Electronic, DALI dimmable  
SWD Dimming switch



**5 Year Warranty**  
As a globally leading luminaire manufacturer, Thorn Lighting provides a five-year warranty for its complete product range within all European Countries. [www.thornlighting.com/warranty](http://www.thornlighting.com/warranty)

[www.thornlighting.com/JUP3](http://www.thornlighting.com/JUP3)

**THORN**  
LIGHTING PEOPLE